

# Glow

**HANSA**  
by styro

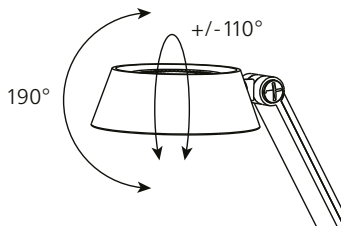


Power adapter

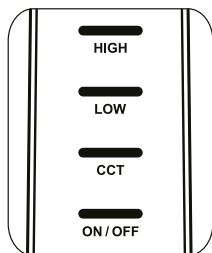


DC plug

## Lamp adjustments



## Operation

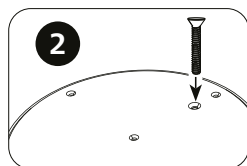
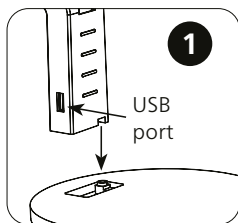


Dimmer

Colour temp. change

Touch to turn on/off

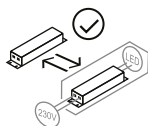
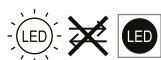
## Installation



Memory function: previous colour temp. and dimming level are recalled at following turn on

- (1) Insert the lamp post and
- (2) screw the lamp post to the base

SP20240620



## Technical data

Voltage:	AC 220-240 V, 50-60 Hz
Lighting power:	8 W
Luminous flux:	480 lm
Colour temp.:	3000, 4000, 6300 K
USB port:	DC 5V, 1A
Protection class:	II (w/o adapter III)
Ingress protection:	IP20

Model number: 41-5011.120

This product contains a light source of energy efficiency class E

The construction of the luminaire does not allow the lighting source to be replaced, as there is a risk of damaging the luminaire. The operating device is in the adapter.

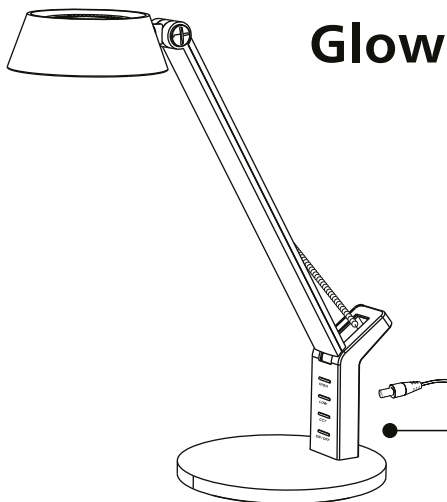
## styro ag

Frauholzstr. 27, CH-6422 Steinen  
Tel. +41 (0)41 833 80 10  
info@styro.ch | www.styro.ch

## EU Distributor | styro GmbH

Industriestr. 2, D-91583 Schillingsfürst  
Tel. +49 9868 98949-0  
verkauf@styro.de | www.styro.de



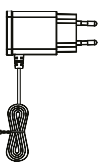


# Glow

**HANSA**  
by styro

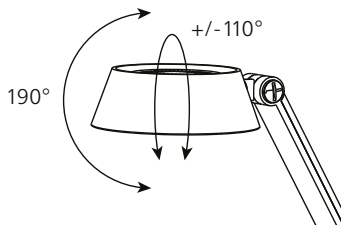


Netzteil

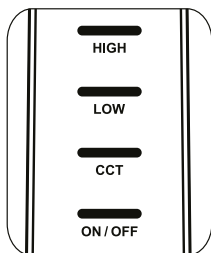


DC-Anschluss

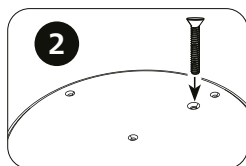
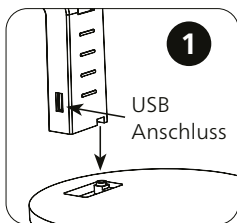
## Lampeneinstellungen



## Bedienung



## Montage

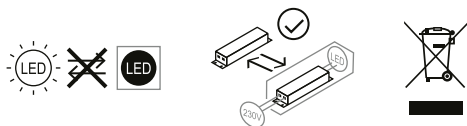


SP20240620

(1) Setzen Sie den Lampenkörper ein und (2) schrauben Sie den Lampenkörper an den Sockel



Memory-Funktion: vorherige Farbtemperatur und Dimmstufe werden beim nächsten Einschalten wieder aufgerufen



## styro ag

Frauholzstr. 27, CH-6422 Steinen  
Tel. +41 (0)41 833 80 10  
info@styro.ch | www.styro.ch

## EU Distributor | styro GmbH

Industriestr. 2, D-91583 Schillingsfürst  
Tel. +49 9868 98949-0  
verkauf@styro.de | www.styro.de

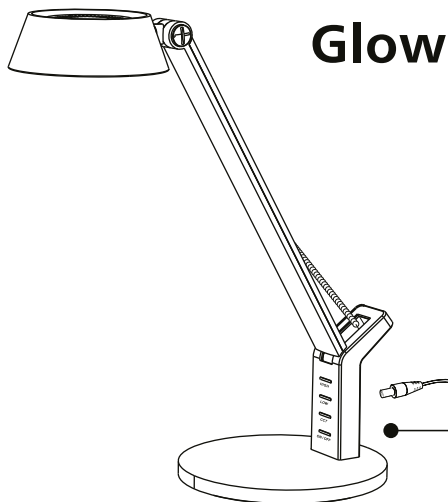


## Technische Daten

Versorgungsspannung: AC 220-240 V, 50-60 Hz  
Licht Leistung: 8W  
Lichtstrom: 480 lm  
Farbtemperatur: 3000, 4000, 6300K  
USB Anschluss: DC 5V, 1A  
Schutzklasse: II (ohne Netzteil)  
Schutzart: IP20  
Modellnummer: 41-5011.120

Dieses Produkt enthält eine Lichtquelle der Energieeffizienzklasse E.

Der Aufbau der Leuchte erlaubt keinen Austausch des Leuchtmittels, da die Gefahr besteht, die Leuchte dabei zu beschädigen. Das Betriebsgerät befindet sich im Netzteil.

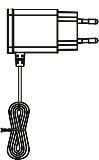


# Glow

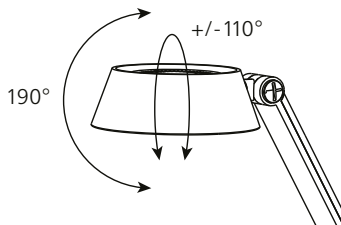
**HANSA**  
by styro



Adaptateur secteur

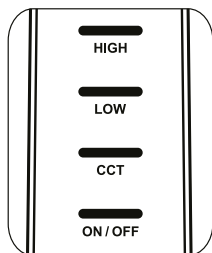


## Réglages de la lampe



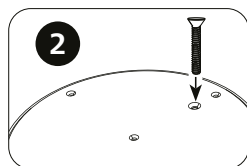
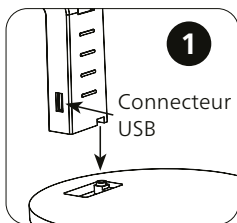
● Connecteur DC

## Fonctionnement



Changement de temp. de couleur  
Touchez pour ON/OFF

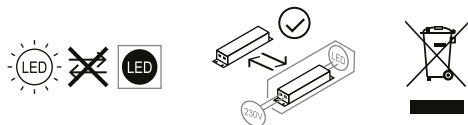
## Montage



- (1) Insérez le corps de lampe et
- (2) le visser au socle de la lampe

Fonction mémoire : La teinte de lumière et le niveau de variation précédents sont rappelés à l'allumage suivant

SP20240620



## Données techniques

Tension d'alimentation : AC 220-240 V, 50-60 Hz  
 Puissance d'éclairage : 8W  
 Flux lumineux : 480 lm  
 Temp. de couleur : 3000, 4000, 6300K  
 Connecteur USB : DC 5V, 1A  
 Classe de protection : II (sans adaptateur : III)  
 Indice de protection : IP20  
 Numéro d'article : 41-5011.120

### styro ag

Frauholzstr. 27, CH-6422 Steinen  
 Tel. +41 (0)41 833 80 10  
 info@styro.ch | www.styro.ch

### EU Distributor | styro GmbH

Industriestr. 2, D-91583 Schillingsfürst  
 Tel. +49 9868 98949-0  
 verkauf@styro.de | www.styro.de



Ce produit contient une source lumineuse de classe d'efficacité énergétique E.

La construction du luminaire ne permet pas de remplacer la source lumineuse, car il y a un risque d'endommager le luminaire. L'appareillage de commande se situe dans l'adaptateur secteur.